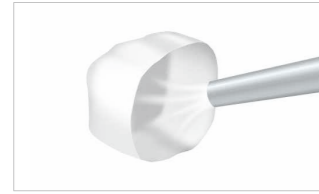


CLINICAL & PRODUCT INFORMATION

One single procedure for your crown cementations

Zirconia, Lithium Disilicate or Metal. No primers required.
One single procedure regardless of the restorative material.



Conditioning the crown.*

* Refer to "Conditioning the prosthetic restoration".



Dispense an equal amount of Paste A & B.
Mix Paste A & B for 10 seconds.



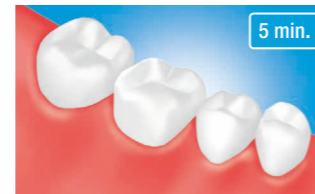
Apply the cement to the crown.



Place the crown.



Light-cure for 2 to 5 seconds or chemical-cure for 2 to 4 minutes, then remove the excess cement.

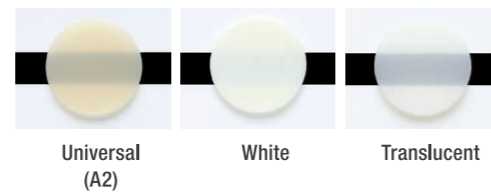


Maintain isolation for 5 minutes.*
* For a translucent restoration, light-cure.

TECHNICAL SPECIFICATION

- F- ion release :** Contains surface treated sodium fluoride (>1%)
- Storage temperature :** 2-25 / 36-77°F
- Radiopacity :** Yes
- Film thickness :** Approx. 16 μm

Shades available



ORDER INFORMATION

PANAVIA™ SA LUTING Multi AUTOMIX

- #4285-WD PANAVIA SA LUTING Multi Automix Value Pack (Universal (A2))
Syringe × 3, Mixing Tip 20 × 2, Endo tip(SS) 20 × 1
- #4286-WD PANAVIA SA LUTING Multi Automix Value Pack (Translucent)
Syringe × 3, Mixing Tip 20 × 2, Endo tip(SS) 20 × 1
- #4287-WD PANAVIA SA LUTING Multi Automix (Universal (A2))
Syringe × 1, Mixing Tip 20
- #4288-WD PANAVIA SA LUTING Multi Automix (White)
Syringe × 1, Mixing Tip 20
- #4289-WD PANAVIA SA LUTING Multi Automix (Translucent)
Syringe × 1, Mixing Tip 20
- #4290-WD PANAVIA SA LUTING Multi Automix Mini Pack (Universal (A2))
Syringe × 1(Paste A and B 2.8 g (1.6 mL)), Mixing Tip 5
- #4291-WD PANAVIA SA LUTING Multi Automix Mini Pack (White)
Syringe × 1(Paste A and B 2.8 g (1.6 mL)), Mixing Tip 5
- #4292-WD PANAVIA SA LUTING Multi Automix Mini Pack (Translucent)
Syringe × 1(Paste A and B 2.8 g (1.6 mL)), Mixing Tip 5
- #4293-WD PANAVIA SA LUTING Multi Automix Mixing tip 20 pcs
- #4294-WD PANAVIA SA LUTING Multi Automix Endo tip (SS) 20 pcs



Syringe 1x: Paste A and B 8.2g (4.6 mL) except Mini Pack

PANAVIA™ SA LUTING Multi HANDMIX

- #4270-WD #4270-WD PANAVIA SA LUTING Multi Handmix Value Pack (Universal (A2))
Syringe × 3, Mixing Spatula, Mixing Pad
- #4271-WD #4271-WD PANAVIA SA LUTING Multi Handmix Value Pack (Translucent)
Syringe × 3, Mixing Spatula, Mixing Pad
- #4272-WD #4272-WD PANAVIA SA LUTING Multi Handmix (Universal (A2))
- #4273-WD #4273-WD PANAVIA SA LUTING Multi Handmix (White)
- #4274-WD #4274-WD PANAVIA SA LUTING Multi Handmix (Translucent)
- #4275-WD #4275-WD PANAVIA SA LUTING Multi Handmix Double Pack (Universal (A2))
Syringe × 2, Mixing Spatula, Mixing Pad
- #4276-WD #4276-WD PANAVIA SA LUTING Multi Handmix Double Pack (Translucent)
Syringe × 2, Mixing Spatula, Mixing Pad
- #4277-WD #4277-WD PANAVIA SA LUTING Multi Handmix Mini Pack (Universal (A2))
Syringe × 1(Paste A and B 2.2 g (1.2 mL))
- #4278-WD #4278-WD PANAVIA SA LUTING Multi Handmix Mini Pack (White)
Syringe × 1(Paste A and B 2.2 g (1.2 mL))
- #4279-WD #4279-WD PANAVIA SA LUTING Multi Handmix Mini Pack (Translucent)
Syringe × 1(Paste A and B 2.2 g (1.2 mL))



Syringe 1x: Paste A and B 9.2 g (5 mL) except Mini Pack

- Before using this product, be sure to read the Instructions for Use supplied with the product.
- The specifications and appearance of the product are subject to change without notice.
- Printed color can be slightly different from actual color.

"PANAVIA", "AVENCIA" and "CLEARFIL" are trademarks of KURARAY CO., LTD
"KATANA" is a trademark of NORITAKE CO., LIMITED.

PANAVIA™ SA LUTING Multi

Self-Adhesive Resin Cement

SIMPLE, CLEAN AND VERSATILE

FORGET ABOUT PRIMERS



A BREAKTHROUGH FROM THE INNOVATORS OF ADHESION AND SILANE TECHNOLOGY.

PANAVIA™ SA Cement Universal is a forerunner in self-adhesive resin cements containing the unique LCSi monomer that adheres to virtually every material including glass ceramics without the need for a separate primer. Using a unique silane coupling agent built into the paste - LCSi monomer - the cement delivers a strong, durable chemical bond to porcelain, lithium disilicate and composite resin. The original MDP monomer present in the paste too, allows for chemical reactivity with zirconia, dentin and enamel.

Building on the success of our PANAVIA™ SA Cement Plus, PANAVIA™ SA Cement Universal also offers the same wide range of indications for adhesion and is suitable for crowns/bridges, inlays/onlays, posts, and even adhesion bridges. Thanks to its powerful single-step bonding formula, cementation is easier than ever before. The product is available in both automix and handmix options.



The Original LCSi monomer creates a strong chemical bond to Porcelain, Lithium Disilicate and Composite Resin.



The Original MDP monomer creates a strong chemical bond to Metal Alloy, Zirconia, Enamel and Dentin.

EASY STORAGE. EASY APPLICATION. EASY EXCESS REMOVAL.



Apply



Remove cement



Ready



Easy application



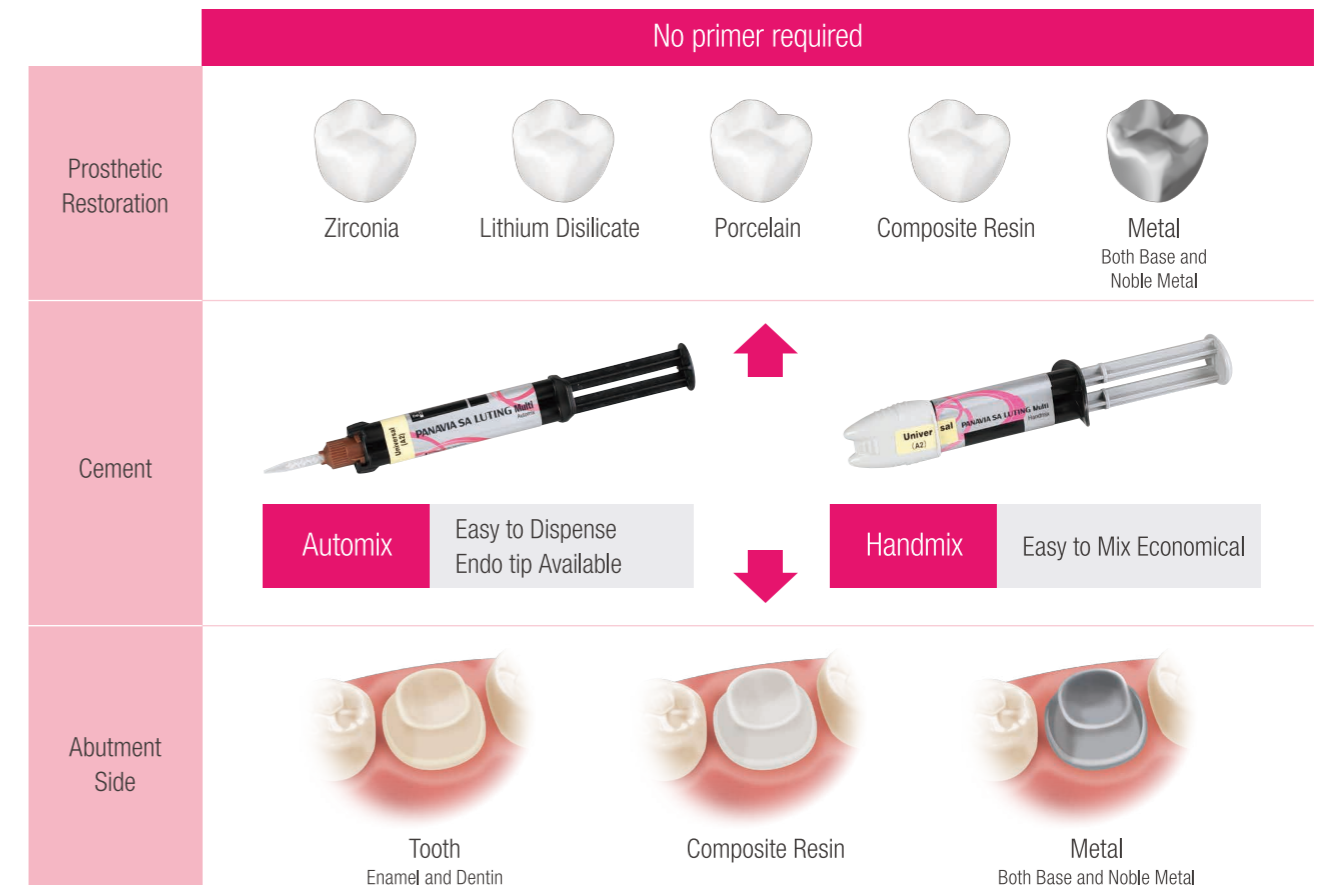
Room temperature storage

¹ Original MDP technology

Kuraray Noritake Dental's original MDP technology was created in 1981 and engineered to push adhesive dental materials to their maximum performance. Since launching PANAVIA™ with the original MDP in 1983 it has become a world wide success. That's why we integrated MDP in most of our adhesive products, like gold standard CLEARFIL™ SE BOND. Still today, more than 30 years after its invention, MDP continues to have an impact on the dental world. It has recently even been used by other manufacturers. We are honored that they chose MDP to improve their adhesive products. But what is MDP actually? It's a functional monomer (10-Methacryloyloxydecyl Dihydrogen Phosphate) that is the connector between our adhesive materials and the tooth structure, metal alloys and zirconia. Only the best functional monomer technology will enable you to provide the most durable treatment.

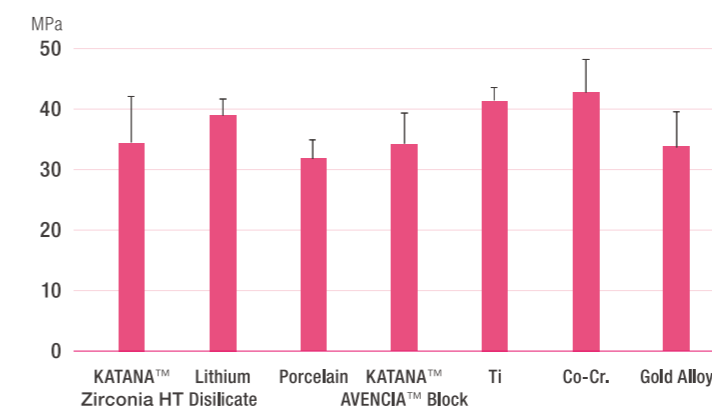
EASY CEMENTATION WITHOUT ADDITIONAL PRIMERS

Say goodbye to complicated bonding protocols and simplify your work flow.

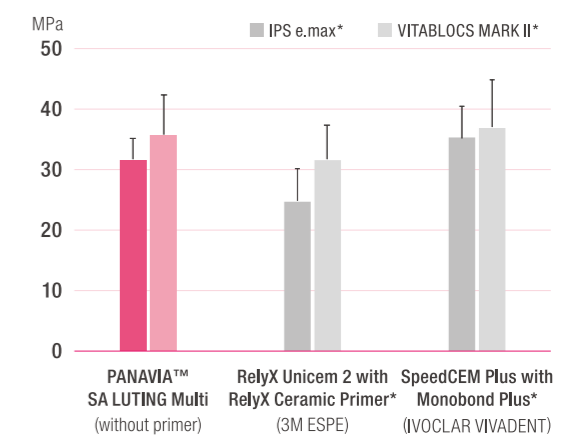


Original MDP Monomer: High Bond Strength

Shear Bond Strength to Restorative Materials



Shear Bond Strength between modern ceramics and SUS rod after one-day storage



after 24 hours 37°C
Data source: Kuraray Noritake Dental Inc.

Dr. Irie et al. 150th meeting of the Japanese Society of Conservative Dentistry, data from the abstract Shear bond strength to modern ceramics for restoration *Not a trademark of KURARAY CO., LTD